



Test Report

Report No. A224004257650102R1

Page 1 of 19

Company Name YUNG LI CO.,LTD**shown on Report****Address** NO. 32, DAPU INDUSTRIAL ST.,CHANGPING TOWN, DONGGUAN
CITY,GUANGDONG PROVINCE,CHINA 523571**The following sample(s) and sample information was/were submitted and identified by/on the behalf of the applicant**

CTI Sample ID	Sample Name(s)
A224004257650101001	TPE BLACK
A224004257650101002	TPE WHITE
A224004257650101003	TPE BROWN
A224004257650101004	TPE BLUE
A224004257650101005	TPE YELLOW
A224004257650101006	TPE GREEN
A224004257650101007	TPE GRAY
A2240075667101010	CABLE COPPER

Sample Received Date Feb. 21, 2024
Testing Period Feb. 29, 2024 to Mar. 5, 2024**Test Requested** As specified by client, to test Lead (Pb), Cadmium (Cd), Mercury (Hg), Hexavalent Chromium (Cr(VI)), Polybrominated Biphenyls (PBBs), Polybrominated Diphenyl Ethers (PBDEs), Phthalates (DBP, BBP, DEHP, DIBP), Polycyclic Aromatic Hydrocarbons (PAHs), Fluorine (F), Chlorine (Cl), Bromine (Br), Iodine (I), Phthalates, Tetrabromobisphenol A (TBBP-A), Perfluorooctane Sulfonates (PFOS), Red phosphorus in the submitted sample(s).**Test Method/Test Result(s)** Please refer to the following page(s).

Approved by

Date

Mar. 13, 2024

Hill Zheng
Technical Manager

No. M661471015

Centre Testing International Group Co.,Ltd.

CTI Building, Xing Dong Community, Xin'an Sub-district, Bao'an District, Shenzhen City, Guangdong Province, P.R. China

Test Report

Report No. A224004257650102R1

Page 2 of 19

Test Method

Tested Item(s)	Test Method	Measured Equipment(s)
Lead (Pb)	IEC 62321-5:2013	ICP-OES
Cadmium (Cd)	IEC 62321-5:2013	ICP-OES
Mercury (Hg)	IEC 62321-4:2013+AMD1:2017 CSV	ICP-OES
Hexavalent Chromium (Cr(VI))	IEC 62321-7-1:2015	UV-Vis
	IEC 62321-7-2:2017 and/or determination of Total Chromium by IEC 62321-5:2013	UV-Vis/ICP-OES
Polybrominated Biphenyls (PBBs)	IEC 62321-6:2015	GC-MS
Polybrominated Diphenyl Ethers (PBDEs)	IEC 62321-6:2015	GC-MS
Phthalates (DBP, BBP, DEHP, DIBP)	IEC 62321-8:2017	GC-MS
Polycyclic Aromatic Hydrocarbons (PAHs)	AfPS GS 2019:01 PAK	GC-MS
Fluorine (F)	Refer to EN 14582:2016	IC
Chlorine (Cl)	Refer to EN 14582:2016	IC
Bromine (Br)	Refer to EN 14582:2016	IC
Iodine (I)	Refer to EN 14582:2016	IC
Phthalates	Refer to EN 14372:2004(E)	GC-MS
Tetrabromobisphenol A (TBBP-A)	Refer to US EPA 3550C:2007 & US EPA 8270E:2018	GC-MS
Perfluorooctane Sulfonates(PFOS)	Refer to US EPA 3550C:2007 & US EPA 8321B:2007	LC-MS-MS
Red phosphorus	GB/T 9722-2006	PY-GC-MS
Phthalates	IEC 62321-8:2017	GC-MS

Test Report

Report No. A224004257650102R1

Page 3 of 19

Test Result(s)

Tested Item(s)	Result			MDL
	A22400425 76501002	A22400425 76501003	A22400425 76501004	
Lead (Pb)	N.D.	N.D.	N.D.	2 mg/kg
Cadmium (Cd)	N.D.	N.D.	N.D.	2 mg/kg
Mercury (Hg)	N.D.	N.D.	N.D.	2 mg/kg
Hexavalent Chromium (Cr(VI))	N.D.	N.D.	N.D.	8 mg/kg

Tested Item(s)	Result			MDL
	A22400425 76501005	A22400425 76501006	A22400425 76501007	
Lead (Pb)	N.D.	N.D.	N.D.	2 mg/kg
Cadmium (Cd)	N.D.	N.D.	N.D.	2 mg/kg
Mercury (Hg)	N.D.	N.D.	N.D.	2 mg/kg
Hexavalent Chromium (Cr(VI))	N.D.	N.D.	N.D.	8 mg/kg

Tested Item(s)	Result		MDL
	A22400425 76501001	A22400756 67101010	
Lead (Pb) *	N.D.	N.D.	2 mg/kg
Cadmium (Cd) *	N.D.	N.D.	2 mg/kg
Mercury (Hg) *	N.D.	N.D.	2 mg/kg
Hexavalent Chromium (Cr(VI)) *	N.D.	--	8 mg/kg
	--	N.D. ▼	0.10 µg/cm ² (LOQ)

Tested Item(s)	Result	MDL
	A2240042576501001	
Polybrominated Biphenyls (PBBs) *		
Monobromobiphenyl	N.D.	5 mg/kg
Dibromobiphenyl	N.D.	5 mg/kg
Tribromobiphenyl	N.D.	5 mg/kg
Tetrabromobiphenyl	N.D.	5 mg/kg
Pentabromobiphenyl	N.D.	5 mg/kg
Hexabromobiphenyl	N.D.	5 mg/kg
Heptabromobiphenyl	N.D.	5 mg/kg
Octabromobiphenyl	N.D.	5 mg/kg
Nonabromobiphenyl	N.D.	5 mg/kg
Decabromobiphenyl	N.D.	5 mg/kg

Test Report

Report No. A224004257650102R1

Page 4 of 19

Tested Item(s)	Result			MDL
	A22400425 76501002	A22400425 76501003	A22400425 76501004	
Polybrominated Biphenyls (PBBs)				
Monobromobiphenyl	N.D.	N.D.	N.D.	5 mg/kg
Dibromobiphenyl	N.D.	N.D.	N.D.	5 mg/kg
Tribromobiphenyl	N.D.	N.D.	N.D.	5 mg/kg
Tetrabromobiphenyl	N.D.	N.D.	N.D.	5 mg/kg
Pentabromobiphenyl	N.D.	N.D.	N.D.	5 mg/kg
Hexabromobiphenyl	N.D.	N.D.	N.D.	5 mg/kg
Heptabromobiphenyl	N.D.	N.D.	N.D.	5 mg/kg
Octabromobiphenyl	N.D.	N.D.	N.D.	5 mg/kg
Nonabromobiphenyl	N.D.	N.D.	N.D.	5 mg/kg
Decabromobiphenyl	N.D.	N.D.	N.D.	5 mg/kg

Tested Item(s)	Result			MDL
	A22400425 76501005	A22400425 76501006	A22400425 76501007	
Polybrominated Biphenyls (PBBs)				
Monobromobiphenyl	N.D.	N.D.	N.D.	5 mg/kg
Dibromobiphenyl	N.D.	N.D.	N.D.	5 mg/kg
Tribromobiphenyl	N.D.	N.D.	N.D.	5 mg/kg
Tetrabromobiphenyl	N.D.	N.D.	N.D.	5 mg/kg
Pentabromobiphenyl	N.D.	N.D.	N.D.	5 mg/kg
Hexabromobiphenyl	N.D.	N.D.	N.D.	5 mg/kg
Heptabromobiphenyl	N.D.	N.D.	N.D.	5 mg/kg
Octabromobiphenyl	N.D.	N.D.	N.D.	5 mg/kg
Nonabromobiphenyl	N.D.	N.D.	N.D.	5 mg/kg
Decabromobiphenyl	N.D.	N.D.	N.D.	5 mg/kg

Test Report

Report No. A224004257650102R1

Page 5 of 19

Tested Item(s)	Result	MDL
	A2240042576501001	
Polybrominated Diphenyl Ethers (PBDEs) *		
Monobromodiphenyl ether	N.D.	5 mg/kg
Dibromodiphenyl ether	N.D.	5 mg/kg
Tribromodiphenyl ether	N.D.	5 mg/kg
Tetrabromodiphenyl ether	N.D.	5 mg/kg
Pentabromodiphenyl ether	N.D.	5 mg/kg
Hexabromodiphenyl ether	N.D.	5 mg/kg
Heptabromodiphenyl ether	N.D.	5 mg/kg
Octabromodiphenyl ether	N.D.	5 mg/kg
Nonabromodiphenyl ether	N.D.	5 mg/kg
Decabromodiphenyl ether	N.D.	5 mg/kg

Tested Item(s)	Result			MDL
	A22400425 76501002	A22400425 76501003	A22400425 76501004	
Polybrominated Diphenyl Ethers (PBDEs)				
Monobromodiphenyl ether	N.D.	N.D.	N.D.	5 mg/kg
Dibromodiphenyl ether	N.D.	N.D.	N.D.	5 mg/kg
Tribromodiphenyl ether	N.D.	N.D.	N.D.	5 mg/kg
Tetrabromodiphenyl ether	N.D.	N.D.	N.D.	5 mg/kg
Pentabromodiphenyl ether	N.D.	N.D.	N.D.	5 mg/kg
Hexabromodiphenyl ether	N.D.	N.D.	N.D.	5 mg/kg
Heptabromodiphenyl ether	N.D.	N.D.	N.D.	5 mg/kg
Octabromodiphenyl ether	N.D.	N.D.	N.D.	5 mg/kg
Nonabromodiphenyl ether	N.D.	N.D.	N.D.	5 mg/kg
Decabromodiphenyl ether	N.D.	N.D.	N.D.	5 mg/kg

Test Report

Report No. A224004257650102R1

Page 6 of 19

Tested Item(s)	Result			MDL
	A22400425 76501005	A22400425 76501006	A22400425 76501007	
Polybrominated Diphenyl Ethers (PBDEs)				
Monobromodiphenyl ether	N.D.	N.D.	N.D.	5 mg/kg
Dibromodiphenyl ether	N.D.	N.D.	N.D.	5 mg/kg
Tribromodiphenyl ether	N.D.	N.D.	N.D.	5 mg/kg
Tetrabromodiphenyl ether	N.D.	N.D.	N.D.	5 mg/kg
Pentabromodiphenyl ether	N.D.	N.D.	N.D.	5 mg/kg
Hexabromodiphenyl ether	N.D.	N.D.	N.D.	5 mg/kg
Heptabromodiphenyl ether	N.D.	N.D.	N.D.	5 mg/kg
Octabromodiphenyl ether	N.D.	N.D.	N.D.	5 mg/kg
Nonabromodiphenyl ether	N.D.	N.D.	N.D.	5 mg/kg
Decabromodiphenyl ether	N.D.	N.D.	N.D.	5 mg/kg

Tested Item(s)	Result				MDL
	A22400425 76501001	A22400425 76501003	A22400425 76501004	A22400425 76501005	
Polycyclic Aromatic Hydrocarbons (PAHs)					
Naphthalene	0.8 mg/kg	0.8 mg/kg	N.D.	N.D.	0.2 mg/kg
Phenanthrene	N.D.	N.D.	N.D.	N.D.	0.2 mg/kg
Anthracene	N.D.	N.D.	N.D.	N.D.	0.2 mg/kg
Fluoranthene	N.D.	N.D.	N.D.	N.D.	0.2 mg/kg
Pyrene	N.D.	N.D.	N.D.	N.D.	0.2 mg/kg
Chrysene	N.D.	N.D.	N.D.	N.D.	0.2 mg/kg
Benzo(a)anthracene	N.D.	N.D.	N.D.	N.D.	0.2 mg/kg
Benzo(b)fluoranthene	N.D.	N.D.	N.D.	N.D.	0.2 mg/kg
Benzo(k)fluoranthene	N.D.	N.D.	N.D.	N.D.	0.2 mg/kg
Benzo(j)fluoranthene	N.D.	N.D.	N.D.	N.D.	0.2 mg/kg
Benzo(a)pyrene	N.D.	N.D.	N.D.	N.D.	0.2 mg/kg
Benzo(e)pyrene	N.D.	N.D.	N.D.	N.D.	0.2 mg/kg
Dibenzo(a,h)anthracene	N.D.	N.D.	N.D.	N.D.	0.2 mg/kg
Benzo(g,h,i)perylene	N.D.	N.D.	N.D.	N.D.	0.2 mg/kg
Indeno(1,2,3-cd)pyrene	N.D.	N.D.	N.D.	N.D.	0.2 mg/kg
Acenaphthene	N.D.	N.D.	N.D.	N.D.	0.2 mg/kg
Fluorene	N.D.	N.D.	N.D.	N.D.	0.2 mg/kg
Acenaphthylene	N.D.	N.D.	N.D.	N.D.	0.2 mg/kg

Test Report

Report No. A224004257650102R1

Page 7 of 19

Tested Item(s)	Result		MDL
	A22400425 76501006	A22400425 76501007	
Polycyclic Aromatic Hydrocarbons (PAHs)			
Naphthalene	0.8 mg/kg	N.D.	0.2 mg/kg
Phenanthrene	N.D.	N.D.	0.2 mg/kg
Anthracene	N.D.	N.D.	0.2 mg/kg
Fluoranthene	N.D.	N.D.	0.2 mg/kg
Pyrene	N.D.	N.D.	0.2 mg/kg
Chrysene	N.D.	N.D.	0.2 mg/kg
Benzo(a)anthracene	N.D.	N.D.	0.2 mg/kg
Benzo(b)fluoranthene	N.D.	N.D.	0.2 mg/kg
Benzo(k)fluoranthene	N.D.	N.D.	0.2 mg/kg
Benzo(j)fluoranthene	N.D.	N.D.	0.2 mg/kg
Benzo(a)pyrene	N.D.	N.D.	0.2 mg/kg
Benzo(e)pyrene	N.D.	N.D.	0.2 mg/kg
Dibenzo(a,h)anthracene	N.D.	N.D.	0.2 mg/kg
Benzo(g,h,i)perylene	N.D.	N.D.	0.2 mg/kg
Indeno(1,2,3-cd)pyrene	N.D.	N.D.	0.2 mg/kg
Acenaphthene	N.D.	N.D.	0.2 mg/kg
Fluorene	N.D.	N.D.	0.2 mg/kg
Acenaphthylene	N.D.	N.D.	0.2 mg/kg

Test Report

Report No. A224004257650102R1

Page 8 of 19

Tested Item(s)	Result	MDL
	A2240042576501002	
Polycyclic Aromatic Hydrocarbons (PAHs) *		
Naphthalene	0.8 mg/kg	0.2 mg/kg
Phenanthrene	N.D.	0.2 mg/kg
Anthracene	N.D.	0.2 mg/kg
Fluoranthene	N.D.	0.2 mg/kg
Pyrene	N.D.	0.2 mg/kg
Chrysene	N.D.	0.2 mg/kg
Benzo(a)anthracene	N.D.	0.2 mg/kg
Benzo(b)fluoranthene	N.D.	0.2 mg/kg
Benzo(k)fluoranthene	N.D.	0.2 mg/kg
Benzo(j)fluoranthene	N.D.	0.2 mg/kg
Benzo(a)pyrene	N.D.	0.2 mg/kg
Benzo(e)pyrene	N.D.	0.2 mg/kg
Dibenzo(a,h)anthracene	N.D.	0.2 mg/kg
Benzo(g,h,i)perylene	N.D.	0.2 mg/kg
Indeno(1,2,3-cd)pyrene	N.D.	0.2 mg/kg
Acenaphthene	N.D.	0.2 mg/kg
Fluorene	N.D.	0.2 mg/kg
Acenaphthylene	N.D.	0.2 mg/kg

Tested Item(s)	Result			MDL
	A22400425 76501001	A22400425 76501002	A22400425 76501003	
Fluorine (F)	N.D.	N.D.	N.D.	10 mg/kg
Chlorine (Cl)	N.D.	N.D.	N.D.	10 mg/kg
Bromine (Br)	N.D.	N.D.	N.D.	10 mg/kg
Iodine (I)	N.D.	N.D.	N.D.	10 mg/kg

Tested Item(s)	Result			MDL
	A22400425 76501004	A22400425 76501005	A22400425 76501006	
Fluorine (F)	N.D.	N.D.	N.D.	10 mg/kg
Chlorine (Cl)	N.D.	145 mg/kg	N.D.	10 mg/kg
Bromine (Br)	N.D.	N.D.	N.D.	10 mg/kg
Iodine (I)	N.D.	N.D.	N.D.	10 mg/kg

Test Report

Report No. A224004257650102R1

Page 9 of 19

Tested Item(s)	Result	MDL
	A2240042576501007	
Fluorine (F)	N.D.	10 mg/kg
Chlorine (Cl)	N.D.	10 mg/kg
Bromine (Br)	N.D.	10 mg/kg
Iodine (I)	N.D.	10 mg/kg

Tested Item(s)	Result	MDL
	A2240042576501001	
Phthalates		
Dibutyl phthalate (DBP) CAS#:84-74-2*	N.D.	50 mg/kg
Butyl benzyl phthalate (BBP) CAS#:85-68-7*	N.D.	50 mg/kg
Di-(2-ethylhexyl) phthalate (DEHP) CAS#:117-81-7*	N.D.	50 mg/kg
Diisobutyl phthalate (DIBP) CAS#:84-69-5*	N.D.	50 mg/kg
Di-n-octyl phthalate (DNOP) CAS#:117-84-0	N.D.	30 mg/kg
Di-isononyl phthalate (DINP) CAS#:28553-12-0,68515-48-0	N.D.	50 mg/kg
Di-iso-decyl phthalate (DIDP) CAS#:26761-40-0,68515-49-1	N.D.	50 mg/kg
Dimethyl phthalate (DMP) CAS#:131-11-3	N.D.	30 mg/kg
Diethyl phthalate (DEP) CAS#:84-66-2	N.D.	30 mg/kg
Dipropyl phthalate (DPrP) CAS#:131-16-8	N.D.	30 mg/kg
Dipentyl phthalate (DPP/DPENP) CAS#:131-18-0	N.D.	30 mg/kg
Diheptyl phthalate (DHP) CAS#:3648-21-3	N.D.	30 mg/kg
Dicyclohexyl phthalate (DCHP) CAS#:84-61-7	N.D.	30 mg/kg
Diisooctyl phthalate (DIOP) CAS#:27554-26-3	N.D.	50 mg/kg
Dinonyl phthalate (DNP) CAS#:84-76-4	N.D.	30 mg/kg
Diisononyl adipate (DINA) CAS#:33703-08-1	N.D.	50 mg/kg

Test Report

Report No. A224004257650102R1

Page 10 of 19

Tested Item(s)	Result			MDL
	A22400425 76501002	A22400425 76501003	A22400425 76501004	
Phthalates				
Dibutyl phthalate (DBP) CAS#:84-74-2	N.D.	N.D.	N.D.	50 mg/kg
Butyl benzyl phthalate (BBP) CAS#:85-68-7	N.D.	N.D.	N.D.	50 mg/kg
Di-(2-ethylhexyl) phthalate (DEHP) CAS#:117-81-7	N.D.	N.D.	N.D.	50 mg/kg
Diisobutyl phthalate (DIBP) CAS#:84-69-5	N.D.	N.D.	N.D.	50 mg/kg
Di-n-octyl phthalate (DNOP) CAS#:117-84-0	N.D.	N.D.	N.D.	30 mg/kg
Di-isononyl phthalate (DINP) CAS#:28553-12-0,68515-48-0	N.D.	N.D.	N.D.	50 mg/kg
Di-iso-decyl phthalate (DIDP) CAS#:26761-40-0,68515-49-1	N.D.	N.D.	N.D.	50 mg/kg
Dimethyl phthalate (DMP) CAS#:131-11-3	N.D.	N.D.	N.D.	30 mg/kg
Diethyl phthalate (DEP) CAS#:84-66-2	N.D.	N.D.	N.D.	30 mg/kg
Dipropyl phthalate (DPrP) CAS#:131-16-8	N.D.	N.D.	N.D.	30 mg/kg
Dipentyl phthalate (DPP/DPENP) CAS#:131-18-0	N.D.	N.D.	N.D.	30 mg/kg
Diheptyl phthalate (DHP) CAS#:3648-21-3	N.D.	N.D.	N.D.	30 mg/kg
Dicyclohexyl phthalate (DCHP) CAS#:84-61-7	N.D.	N.D.	N.D.	30 mg/kg
Diisooctyl phthalate (DIOP) CAS#:27554-26-3	N.D.	N.D.	N.D.	50 mg/kg
Dinonyl phthalate (DNP) CAS#:84-76-4	N.D.	N.D.	N.D.	30 mg/kg
Diisononyl adipate (DINA) CAS#:33703-08-1	N.D.	N.D.	N.D.	50 mg/kg

Test Report

Report No. A224004257650102R1

Page 11 of 19

Tested Item(s)	Result			MDL
	A22400425 76501005	A22400425 76501006	A22400425 76501007	
Phthalates				
Dibutyl phthalate (DBP) CAS#:84-74-2	N.D.	N.D.	N.D.	50 mg/kg
Butyl benzyl phthalate (BBP) CAS#:85-68-7	N.D.	N.D.	N.D.	50 mg/kg
Di-(2-ethylhexyl) phthalate (DEHP) CAS#:117-81-7	N.D.	N.D.	N.D.	50 mg/kg
Diisobutyl phthalate (DIBP) CAS#:84-69-5	N.D.	N.D.	N.D.	50 mg/kg
Di-n-octyl phthalate (DNOP) CAS#:117-84-0*	N.D.	N.D.	N.D.	30 mg/kg
Di-isononyl phthalate (DINP) CAS#:28553-12-0,68515-48-0*	N.D.	N.D.	N.D.	50 mg/kg
Di-iso-decyl phthalate (DIDP) CAS#:26761-40-0,68515-49-1*	N.D.	N.D.	N.D.	50 mg/kg
Dimethyl phthalate (DMP) CAS#:131-11-3*	N.D.	N.D.	N.D.	30 mg/kg
Diethyl phthalate (DEP) CAS#:84-66-2*	N.D.	N.D.	N.D.	30 mg/kg
Dipropyl phthalate (DPrP) CAS#:131-16-8*	N.D.	N.D.	N.D.	30 mg/kg
Dipentyl phthalate (DPP/DPENP) CAS#:131-18-0*	N.D.	N.D.	N.D.	30 mg/kg
Diheptyl phthalate (DHP) CAS#:3648-21-3*	N.D.	N.D.	N.D.	30 mg/kg
Dicyclohexyl phthalate (DCHP) CAS#:84-61-7*	N.D.	N.D.	N.D.	30 mg/kg
Diisooctyl phthalate (DIOP) CAS#:27554-26-3*	N.D.	N.D.	N.D.	50 mg/kg
Dinonyl phthalate (DNP) CAS#:84-76-4*	N.D.	N.D.	N.D.	30 mg/kg
Diisononyl adipate (DINA) CAS#:33703-08-1*	N.D.	N.D.	N.D.	50 mg/kg

Tested Item(s)	Result	MDL
----------------	--------	-----

Test Report

Report No. A224004257650102R1

Page 12 of 19

Tested Item(s)	Result			MDL
	A22400425 7650101001	A22400425 7650101002	A22400425 7650101003	
Phthalates				
Dibutyl phthalate (DBP) CAS#:84-74-2	N.D.	N.D.	N.D.	50 mg/kg
Butyl benzyl phthalate (BBP) CAS#:85-68-7	N.D.	N.D.	N.D.	50 mg/kg
Di-(2-ethylhexyl) phthalate (DEHP) CAS#:117-81-7	N.D.	N.D.	N.D.	50 mg/kg
Diisobutyl phthalate (DIBP) CAS#:84-69-5	N.D.	N.D.	N.D.	50 mg/kg

Tested Item(s)	Result	MDL
	A224004257650101004	
Phthalates		
Dibutyl phthalate (DBP) CAS#:84-74-2	N.D.	50 mg/kg
Butyl benzyl phthalate (BBP) CAS#:85-68-7	N.D.	50 mg/kg
Di-(2-ethylhexyl) phthalate (DEHP) CAS#:117-81-7	N.D.	50 mg/kg
Diisobutyl phthalate (DIBP) CAS#:84-69-5	N.D.	50 mg/kg

Tested Item(s)	Result			MDL
	A22400425 76501001	A22400425 76501002	A22400425 76501004	
Tetrabromobisphenol A (TBBP-A)	N.D.	N.D.	N.D.	5 mg/kg

Tested Item(s)	Result			MDL
	A22400425 76501005	A22400425 76501006	A22400425 76501007	
Tetrabromobisphenol A (TBBP-A)	N.D.	N.D.	N.D.	5 mg/kg

Test Report

Report No. A224004257650102R1

Page 13 of 19

Tested Item(s)	Result			MDL
	A2240042576501003			
Tetrabromobisphenol A (TBBP-A) *	N.D.			5 mg/kg

Tested Item(s)	Result			MDL
	A22400425 76501001	A22400425 76501002	A22400425 76501003	
Perfluorooctane Sulfonates (PFOS)	N.D.	N.D.	N.D.	0.010 mg/kg

Tested Item(s)	Result			MDL
	A22400425 76501005	A22400425 76501006	A22400425 76501007	
Perfluorooctane Sulfonates (PFOS)	N.D.	N.D.	N.D.	0.010 mg/kg

Tested Item(s)	Result			MDL
	A2240042576501004			
Perfluorooctane Sulfonates (PFOS) *	N.D.			0.010 mg/kg

Tested Item(s)	Result			MDL
	A22400425 76501001	A22400425 76501002	A22400425 76501003	
Red phosphorus	Negative	Negative	Negative	500 mg/kg

Tested Item(s)	Result			MDL
	A22400425 76501004	A22400425 76501005	A22400425 76501006	
Red phosphorus	Negative	Negative	Negative	500 mg/kg

Tested Item(s)	Result			MDL
	A2240042576501007			
Red phosphorus	Negative			500 mg/kg

Test Report

Report No. A224004257650102R1

Page 14 of 19

Sample/Part Description

No.	CTI Sample ID	Description
1	A2240042576501001	Black plastic grains
2	A2240042576501002	White plastic grains
3	A2240042576501003	Brown plastic grains
4	A2240042576501004	Blue plastic grains
5	A2240042576501005	Yellow plastic grains
6	A2240042576501006	Green plastic grains
7	A2240042576501007	Gray plastic grains
8	A2240075667101010	Cupreous metal wire

Remark: The sample(s) had been dissolved totally tested for Lead, Cadmium, Mercury.

-MDL = Method Detection Limit

-N.D. = Not Detected (<MDL or LOQ)

-mg/kg = ppm = parts per million

-LOQ = Limit of Quantification, The LOQ of Hexavalent chromium is 0.10 $\mu\text{g}/\text{cm}^2$

-▼The sample is negative for Cr(VI) – The Cr(VI) concentration is below 0.10 $\mu\text{g}/\text{cm}^2$. The coating is considered a non-Cr(VI) based coating. Information on storage conditions and production date of the tested sample is unavailable and thus Cr(VI) results represent status of the sample at the time of testing.

-Negative = Not Contained (The red phosphorus is qualified by PY-GC-MS method which detect pyrolysis products P_4 of red phosphorus. But there is a false positive risk by performing this method, since P_4 could also generate while the phosphate and organic phosphate coexist with some strong oxidizing or reductant agent in pyrolysis process. The result for reference only.)

The test result(s) of sample 001-007 is(are) presented in reference to the result(s) of sample 001-007 that reported in A224004257650101R1.

Note: This testing report revised the full text based on the original report of No. A224004257650102. This testing report displaces the original one which was invalid since the date of this testing report released.

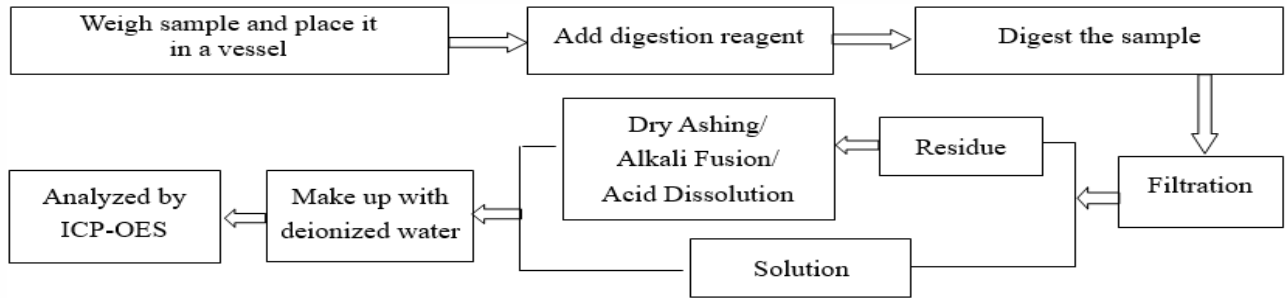
Test Report

Report No. A224004257650102R1

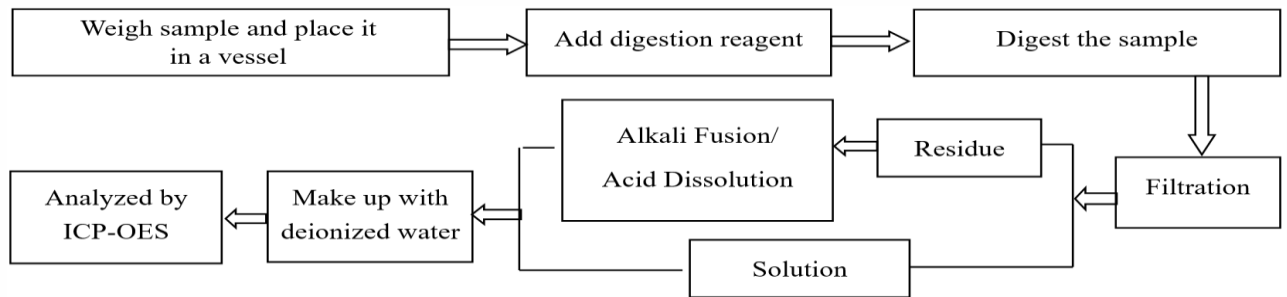
Page 15 of 19

Test Process

1. Lead (Pb), Cadmium (Cd), Chromium(Cr)

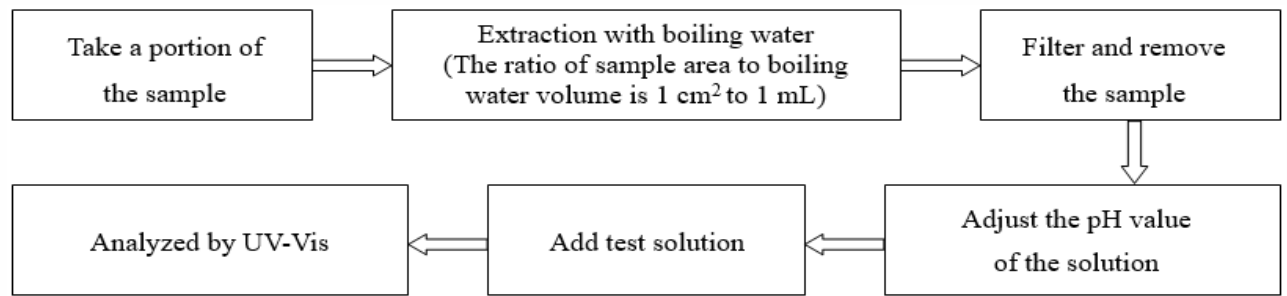


2. Mercury (Hg)

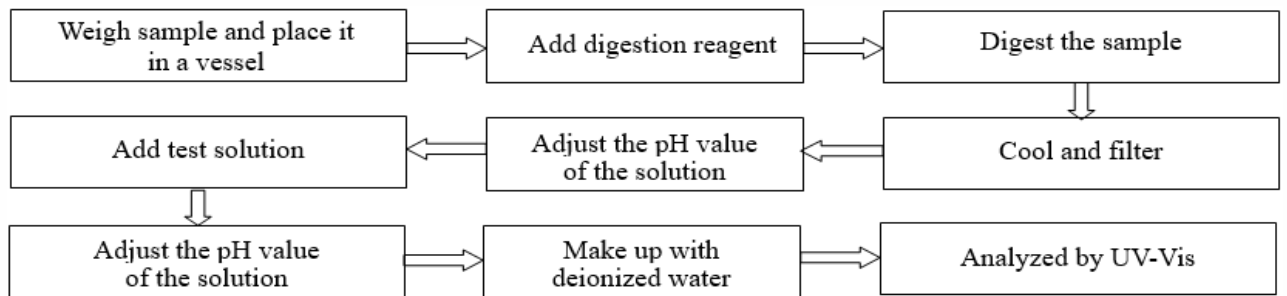


3. Hexavalent Chromium (Cr(VI))

(1) IEC 62321-7-1:2015



(2) IEC 62321-7-2:2017

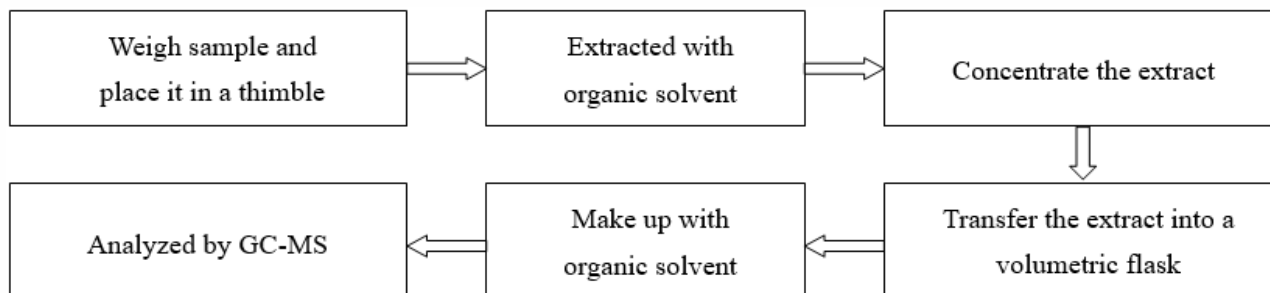


Test Report

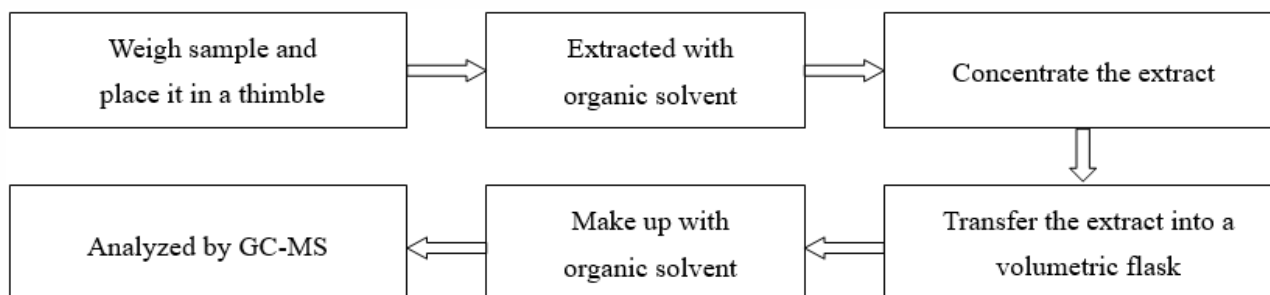
Report No. A224004257650102R1

Page 16 of 19

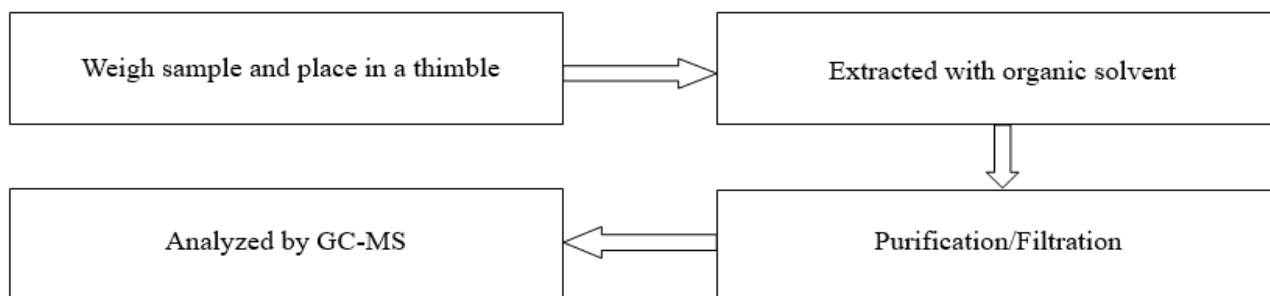
4. Polybrominated Biphenyls (PBBs), Polybrominated Diphenyl Ethers (PBDEs)



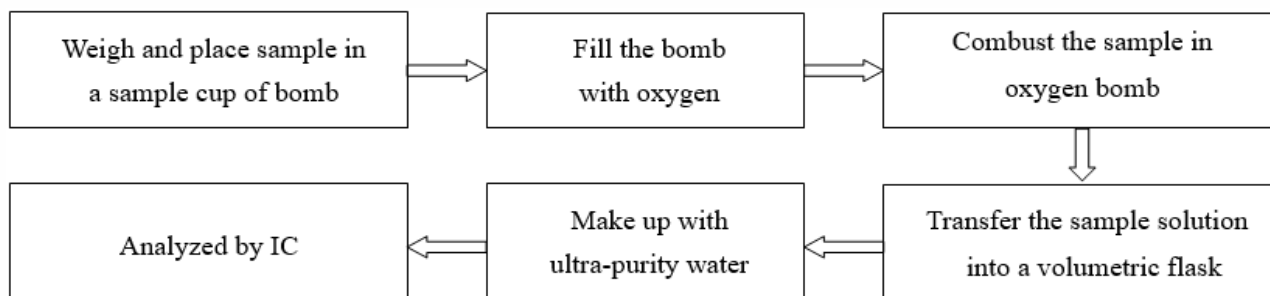
5. Phthalates (DBP, BBP, DEHP, DIBP), Phthalates



6. Polycyclic Aromatic Hydrocarbons (PAHs)



7. Fluorine (F), Chlorine (Cl), Bromine (Br), Iodine (I)

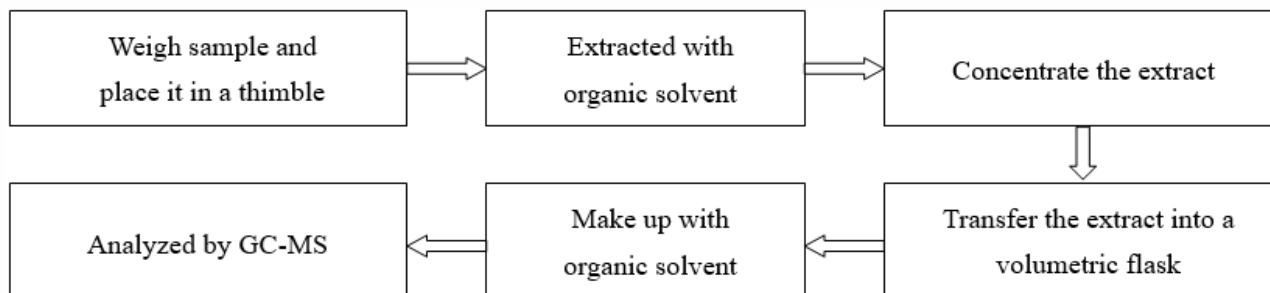


Test Report

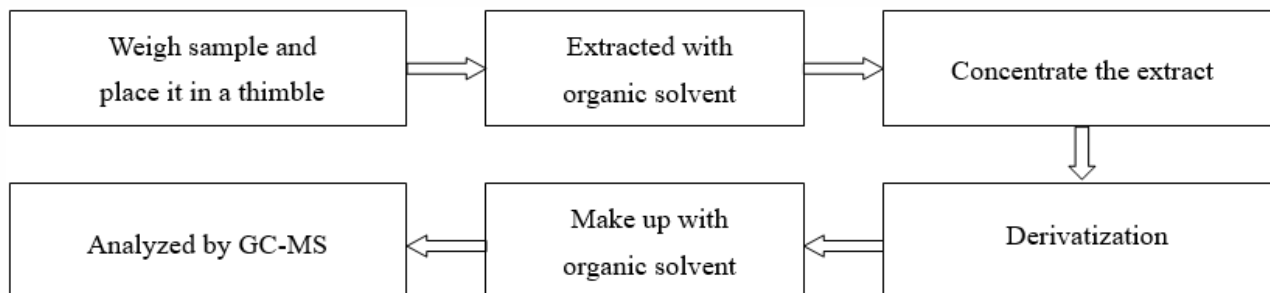
Report No. A224004257650102R1

Page 17 of 19

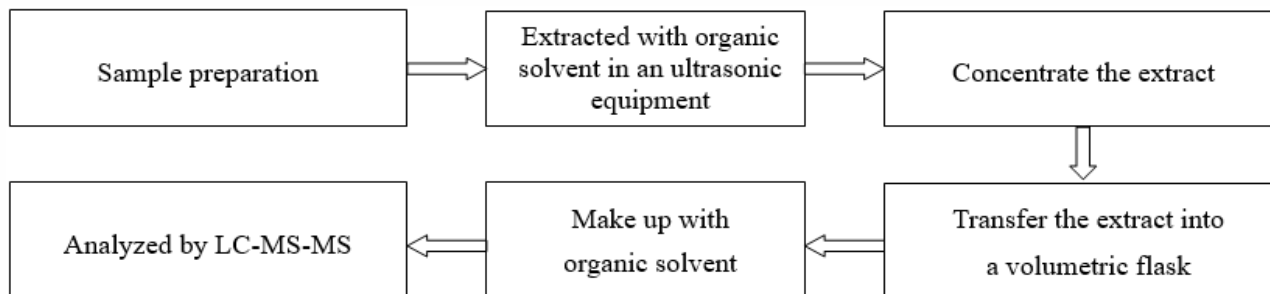
8. Phthalates



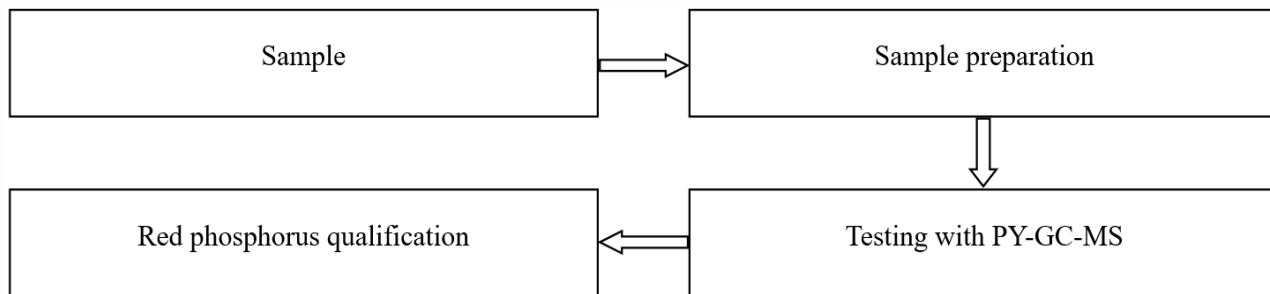
9. Tetrabromobisphenol A (TBBP-A)



10. Perfluorooctane Sulfonates(PFOS)



11. Red phosphorus



Test Report

Report No. A224004257650102R1

Page 18 of 19

Photo(s) of the sample(s)



Test Report

Report No. A224004257650102R1

Page 19 of 19



Statement:

1. This report is considered invalid without approved signature, special seal and the seal on the perforation;
2. The Company Name shown on Report and Address, the sample(s) and sample information was/were provided by the applicant who should be responsible for the authenticity which CTI hasn't verified;
3. The result(s) shown in this report refer(s) only to the sample(s) tested;
4. Unless otherwise stated, the decision rule for conformity reporting is based on Binary Statement for Simple Acceptance Rule (w=0) stated in ILAC-G8:09/2019 / CNAS-GL015:2022;
5. Without written approval of CTI, this report can't be reproduced except in full;
6. In case of any discrepancy between the English version and Chinese version of the testing reports (if generated), the Chinese version shall prevail.

*** End of Report ***

Appendix

Client Reference Information

SPE-1 SPE-2 SPE-3 H03Z1Z1-F H05Z1Z1-F NISPE-1 NISPE-2 H03Z1Z1H2-F H05Z1Z1H2-F SVE SJE SE
H05BQ-F EVE EVJE

Statement:

1. The Appendix Information was/were provided by the applicant who should be responsible for the authenticity which CTI hasn't verified.
2. The Appendix Information is/are the supplement(s) for the Report A224004257650102R1.