



# Test Report

Report No. A224004257650101R2

Page 1 of 25

**Company Name** YUNG LI CO.,LTD

**shown on Report**

**Address** NO. 32, DAPU INDUSTRIAL ST.,CHANGPING TOWN, DONGGUAN  
CITY,GUANGDONG PROVINCE,CHINA 523571

**The following sample(s) and sample information was/were submitted and identified by/on the behalf of the applicant**

CTI Sample ID	Sample Name(s)
A224004257650101001	TPE BLACK
A224004257650101002	TPE WHITE
A224004257650101003	TPE BROWN
A224004257650101004	TPE BLUE
A224004257650101005	TPE YELLOW
A224004257650101006	TPE GREEN
A224004257650101007	TPE GRAY
A224004257650101008	INNERBODY
A224004257650101009	INNER CASE
A2240075667101010	CABLE COPPER
A2240075667101011	COPPER ALLOY
A2240075667101012	TERMINAL COPPER
A2240146335101001	INNER CASE

Sample Received Date Feb. 21, 2024  
Testing Period Feb. 29, 2024 to Mar. 5, 2024

**Test Requested** As specified by client, to test Lead (Pb), Cadmium (Cd), Mercury (Hg), Hexavalent Chromium (Cr(VI)), Polybrominated Biphenyls (PBBs), Polybrominated Diphenyl Ethers (PBDEs), Phthalates (DBP, BBP, DEHP, DIBP), Polycyclic Aromatic Hydrocarbons (PAHs), Fluorine (F), Chlorine (Cl), Bromine (Br), Iodine (I), Phthalates, Tetrabromobisphenol A (TBBP-A), Perfluorooctane Sulfonates (PFOS), Red phosphorus in the submitted sample(s).

**Test Method/Test Result(s)** Please refer to the following page(s).



Approved by

*Hill Zheng*

Date

Mar. 27, 2024

Hill Zheng  
Technical Manager

No. M661471015

Centre Testing International Group Co.,Ltd.

City Building, Xing Dong Community, Xin'an Sub-district, Bao'an District, Shenzhen City, Guangdong Province, P.R. China

# Test Report

Report No. A224004257650101R2

Page 2 of 25

## Test Method

Tested Item(s)	Test Method	Measured Equipment(s)
Lead (Pb)	IEC 62321-5:2013	ICP-OES
Cadmium (Cd)	IEC 62321-5:2013	ICP-OES
Mercury (Hg)	IEC 62321-4:2013+AMD1:2017 CSV	ICP-OES
Hexavalent Chromium (Cr(VI))	IEC 62321-7-1:2015	UV-Vis
	IEC 62321-7-2:2017 and/or determination of Total Chromium by IEC 62321-5:2013	UV-Vis/ICP-OES
Polybrominated Biphenyls (PBBs)	IEC 62321-6:2015	GC-MS
Polybrominated Diphenyl Ethers (PBDEs)	IEC 62321-6:2015	GC-MS
Phthalates (DBP, BBP, DEHP, DIBP)	IEC 62321-8:2017	GC-MS
Polycyclic Aromatic Hydrocarbons (PAHs)	AfPS GS 2019:01 PAK	GC-MS
Fluorine (F)	Refer to EN 14582:2016	IC
Chlorine (Cl)	Refer to EN 14582:2016	IC
Bromine (Br)	Refer to EN 14582:2016	IC
Iodine (I)	Refer to EN 14582:2016	IC
Phthalates	Refer to EN 14372:2004(E)	GC-MS
Tetrabromobisphenol A (TBBP-A)	Refer to US EPA 3550C:2007 & US EPA 8270E:2018	GC-MS
Perfluorooctane Sulfonates(PFOS)	Refer to US EPA 3550C:2007 & US EPA 8321B:2007	LC-MS-MS
Red phosphorus	GB/T 9722-2006	PY-GC-MS
Phthalates	IEC 62321-8:2017	GC-MS

# Test Report

Report No. A224004257650101R2

Page 3 of 25

## Test Result(s)

Tested Item(s)	Result			MDL
	A22400425 76501002	A22400425 76501003	A22400425 76501004	
Lead (Pb)	N.D.	N.D.	N.D.	2 mg/kg
Cadmium (Cd)	N.D.	N.D.	N.D.	2 mg/kg
Mercury (Hg)	N.D.	N.D.	N.D.	2 mg/kg
Hexavalent Chromium (Cr(VI))	N.D.	N.D.	N.D.	8 mg/kg

Tested Item(s)	Result			MDL
	A22400425 76501005	A22400425 76501006	A22400425 76501007	
Lead (Pb)	N.D.	N.D.	N.D.	2 mg/kg
Cadmium (Cd)	N.D.	N.D.	N.D.	2 mg/kg
Mercury (Hg)	N.D.	N.D.	N.D.	2 mg/kg
Hexavalent Chromium (Cr(VI))	N.D.	N.D.	N.D.	8 mg/kg

Tested Item(s)	Result		MDL
	A22400425 76501008	A22400425 76501009	
Lead (Pb)	N.D.	N.D.	2 mg/kg
Cadmium (Cd)	N.D.	N.D.	2 mg/kg
Mercury (Hg)	N.D.	N.D.	2 mg/kg
Hexavalent Chromium (Cr(VI))	N.D.	N.D.	8 mg/kg

Tested Item(s)	Result			MDL
	A22400425 76501001	A22400756 67101010	A22400756 67101011	
Lead (Pb) *	N.D.	N.D.	21528 mg/kg	2 mg/kg
Cadmium (Cd) *	N.D.	N.D.	7 mg/kg	2 mg/kg
Mercury (Hg) *	N.D.	N.D.	N.D.	2 mg/kg
Hexavalent Chromium (Cr(VI)) *	N.D.	--	--	8 mg/kg
	--	N.D.▼	N.D.▼	0.10 µg/cm <sup>2</sup> (LOQ)

# Test Report

Report No. A224004257650101R2

Page 4 of 25

Tested Item(s)	Result	MDL
	A2240075667101012	
Lead (Pb) *	26 mg/kg	2 mg/kg
Cadmium (Cd) *	N.D.	2 mg/kg
Mercury (Hg) *	N.D.	2 mg/kg
Hexavalent Chromium (Cr(VI)) *	--	8 mg/kg
	N.D.▼	0.10 µg/cm <sup>2</sup> (LOQ)

Tested Item(s)	Result	MDL
	A2240042576501001	
<b>Polybrominated Biphenyls (PBBs) *</b>		
Monobromobiphenyl	N.D.	5 mg/kg
Dibromobiphenyl	N.D.	5 mg/kg
Tribromobiphenyl	N.D.	5 mg/kg
Tetrabromobiphenyl	N.D.	5 mg/kg
Pentabromobiphenyl	N.D.	5 mg/kg
Hexabromobiphenyl	N.D.	5 mg/kg
Heptabromobiphenyl	N.D.	5 mg/kg
Octabromobiphenyl	N.D.	5 mg/kg
Nonabromobiphenyl	N.D.	5 mg/kg
Decabromobiphenyl	N.D.	5 mg/kg

# Test Report

Report No. A224004257650101R2

Page 5 of 25

Tested Item(s)	Result			MDL
	A22400425 76501002	A22400425 76501003	A22400425 76501004	
<b>Polybrominated Biphenyls (PBBs)</b>				
Monobromobiphenyl	N.D.	N.D.	N.D.	5 mg/kg
Dibromobiphenyl	N.D.	N.D.	N.D.	5 mg/kg
Tribromobiphenyl	N.D.	N.D.	N.D.	5 mg/kg
Tetrabromobiphenyl	N.D.	N.D.	N.D.	5 mg/kg
Pentabromobiphenyl	N.D.	N.D.	N.D.	5 mg/kg
Hexabromobiphenyl	N.D.	N.D.	N.D.	5 mg/kg
Heptabromobiphenyl	N.D.	N.D.	N.D.	5 mg/kg
Octabromobiphenyl	N.D.	N.D.	N.D.	5 mg/kg
Nonabromobiphenyl	N.D.	N.D.	N.D.	5 mg/kg
Decabromobiphenyl	N.D.	N.D.	N.D.	5 mg/kg

Tested Item(s)	Result			MDL
	A22400425 76501005	A22400425 76501006	A22400425 76501007	
<b>Polybrominated Biphenyls (PBBs)</b>				
Monobromobiphenyl	N.D.	N.D.	N.D.	5 mg/kg
Dibromobiphenyl	N.D.	N.D.	N.D.	5 mg/kg
Tribromobiphenyl	N.D.	N.D.	N.D.	5 mg/kg
Tetrabromobiphenyl	N.D.	N.D.	N.D.	5 mg/kg
Pentabromobiphenyl	N.D.	N.D.	N.D.	5 mg/kg
Hexabromobiphenyl	N.D.	N.D.	N.D.	5 mg/kg
Heptabromobiphenyl	N.D.	N.D.	N.D.	5 mg/kg
Octabromobiphenyl	N.D.	N.D.	N.D.	5 mg/kg
Nonabromobiphenyl	N.D.	N.D.	N.D.	5 mg/kg
Decabromobiphenyl	N.D.	N.D.	N.D.	5 mg/kg

# Test Report

Report No. A224004257650101R2

Page 6 of 25

Tested Item(s)	Result		MDL
	A22400425 76501008	A22400425 76501009	
<b>Polybrominated Biphenyls (PBBs)</b>			
Monobromobiphenyl	N.D.	N.D.	5 mg/kg
Dibromobiphenyl	N.D.	N.D.	5 mg/kg
Tribromobiphenyl	N.D.	N.D.	5 mg/kg
Tetrabromobiphenyl	N.D.	N.D.	5 mg/kg
Pentabromobiphenyl	N.D.	N.D.	5 mg/kg
Hexabromobiphenyl	N.D.	N.D.	5 mg/kg
Heptabromobiphenyl	N.D.	N.D.	5 mg/kg
Octabromobiphenyl	N.D.	N.D.	5 mg/kg
Nonabromobiphenyl	N.D.	N.D.	5 mg/kg
Decabromobiphenyl	N.D.	N.D.	5 mg/kg
Tested Item(s)	Result		MDL
	A2240042576501001		
<b>Polybrominated Diphenyl Ethers (PBDEs) *</b>			
Monobromodiphenyl ether	N.D.		5 mg/kg
Dibromodiphenyl ether	N.D.		5 mg/kg
Tribromodiphenyl ether	N.D.		5 mg/kg
Tetrabromodiphenyl ether	N.D.		5 mg/kg
Pentabromodiphenyl ether	N.D.		5 mg/kg
Hexabromodiphenyl ether	N.D.		5 mg/kg
Heptabromodiphenyl ether	N.D.		5 mg/kg
Octabromodiphenyl ether	N.D.		5 mg/kg
Nonabromodiphenyl ether	N.D.		5 mg/kg
Decabromodiphenyl ether	N.D.		5 mg/kg

# Test Report

Report No. A224004257650101R2

Page 7 of 25

Tested Item(s)	Result			MDL
	A22400425 76501002	A22400425 76501003	A22400425 76501004	
<b>Polybrominated Diphenyl Ethers (PBDEs)</b>				
Monobromodiphenyl ether	N.D.	N.D.	N.D.	5 mg/kg
Dibromodiphenyl ether	N.D.	N.D.	N.D.	5 mg/kg
Tribromodiphenyl ether	N.D.	N.D.	N.D.	5 mg/kg
Tetrabromodiphenyl ether	N.D.	N.D.	N.D.	5 mg/kg
Pentabromodiphenyl ether	N.D.	N.D.	N.D.	5 mg/kg
Hexabromodiphenyl ether	N.D.	N.D.	N.D.	5 mg/kg
Heptabromodiphenyl ether	N.D.	N.D.	N.D.	5 mg/kg
Octabromodiphenyl ether	N.D.	N.D.	N.D.	5 mg/kg
Nonabromodiphenyl ether	N.D.	N.D.	N.D.	5 mg/kg
Decabromodiphenyl ether	N.D.	N.D.	N.D.	5 mg/kg

Tested Item(s)	Result			MDL
	A22400425 76501005	A22400425 76501006	A22400425 76501007	
<b>Polybrominated Diphenyl Ethers (PBDEs)</b>				
Monobromodiphenyl ether	N.D.	N.D.	N.D.	5 mg/kg
Dibromodiphenyl ether	N.D.	N.D.	N.D.	5 mg/kg
Tribromodiphenyl ether	N.D.	N.D.	N.D.	5 mg/kg
Tetrabromodiphenyl ether	N.D.	N.D.	N.D.	5 mg/kg
Pentabromodiphenyl ether	N.D.	N.D.	N.D.	5 mg/kg
Hexabromodiphenyl ether	N.D.	N.D.	N.D.	5 mg/kg
Heptabromodiphenyl ether	N.D.	N.D.	N.D.	5 mg/kg
Octabromodiphenyl ether	N.D.	N.D.	N.D.	5 mg/kg
Nonabromodiphenyl ether	N.D.	N.D.	N.D.	5 mg/kg
Decabromodiphenyl ether	N.D.	N.D.	N.D.	5 mg/kg

# Test Report

Report No. A224004257650101R2

Page 8 of 25

Tested Item(s)	Result		MDL
	A22400425 76501008	A22400425 76501009	
<b>Polybrominated Diphenyl Ethers (PBDEs)</b>			
Monobromodiphenyl ether	N.D.	N.D.	5 mg/kg
Dibromodiphenyl ether	N.D.	N.D.	5 mg/kg
Tribromodiphenyl ether	N.D.	N.D.	5 mg/kg
Tetrabromodiphenyl ether	N.D.	N.D.	5 mg/kg
Pentabromodiphenyl ether	N.D.	N.D.	5 mg/kg
Hexabromodiphenyl ether	N.D.	N.D.	5 mg/kg
Heptabromodiphenyl ether	N.D.	N.D.	5 mg/kg
Octabromodiphenyl ether	N.D.	N.D.	5 mg/kg
Nonabromodiphenyl ether	N.D.	N.D.	5 mg/kg
Decabromodiphenyl ether	N.D.	N.D.	5 mg/kg

Tested Item(s)	Result				MDL
	A22400425 76501001	A22400425 76501003	A22400425 76501004	A22400425 76501005	
<b>Polycyclic Aromatic Hydrocarbons (PAHs)</b>					
Naphthalene	0.8 mg/kg	0.8 mg/kg	N.D.	N.D.	0.2 mg/kg
Phenanthrene	N.D.	N.D.	N.D.	N.D.	0.2 mg/kg
Anthracene	N.D.	N.D.	N.D.	N.D.	0.2 mg/kg
Fluoranthene	N.D.	N.D.	N.D.	N.D.	0.2 mg/kg
Pyrene	N.D.	N.D.	N.D.	N.D.	0.2 mg/kg
Chrysene	N.D.	N.D.	N.D.	N.D.	0.2 mg/kg
Benzo(a)anthracene	N.D.	N.D.	N.D.	N.D.	0.2 mg/kg
Benzo(b)fluoranthene	N.D.	N.D.	N.D.	N.D.	0.2 mg/kg
Benzo(k)fluoranthene	N.D.	N.D.	N.D.	N.D.	0.2 mg/kg
Benzo(j)fluoranthene	N.D.	N.D.	N.D.	N.D.	0.2 mg/kg
Benzo(a)pyrene	N.D.	N.D.	N.D.	N.D.	0.2 mg/kg
Benzo(e)pyrene	N.D.	N.D.	N.D.	N.D.	0.2 mg/kg
Dibenzo(a,h)anthracene	N.D.	N.D.	N.D.	N.D.	0.2 mg/kg
Benzo(g,h,i)perylene	N.D.	N.D.	N.D.	N.D.	0.2 mg/kg
Indeno(1,2,3-cd)pyrene	N.D.	N.D.	N.D.	N.D.	0.2 mg/kg
Acenaphthene	N.D.	N.D.	N.D.	N.D.	0.2 mg/kg
Fluorene	N.D.	N.D.	N.D.	N.D.	0.2 mg/kg
Acenaphthylene	N.D.	N.D.	N.D.	N.D.	0.2 mg/kg



# Test Report

Report No. A224004257650101R2

Page 9 of 25

Tested Item(s)	Result				MDL
	A22400425 76501006	A22400425 76501007	A22400425 76501008	A22400425 76501009	
<b>Polycyclic Aromatic Hydrocarbons (PAHs)</b>					
Naphthalene	0.8 mg/kg	N.D.	N.D.	N.D.	0.2 mg/kg
Phenanthrene	N.D.	N.D.	N.D.	N.D.	0.2 mg/kg
Anthracene	N.D.	N.D.	N.D.	N.D.	0.2 mg/kg
Fluoranthene	N.D.	N.D.	N.D.	N.D.	0.2 mg/kg
Pyrene	N.D.	N.D.	N.D.	N.D.	0.2 mg/kg
Chrysene	N.D.	N.D.	N.D.	N.D.	0.2 mg/kg
Benzo(a)anthracene	N.D.	N.D.	N.D.	N.D.	0.2 mg/kg
Benzo(b)fluoranthene	N.D.	N.D.	N.D.	N.D.	0.2 mg/kg
Benzo(k)fluoranthene	N.D.	N.D.	N.D.	N.D.	0.2 mg/kg
Benzo(j)fluoranthene	N.D.	N.D.	N.D.	N.D.	0.2 mg/kg
Benzo(a)pyrene	N.D.	N.D.	N.D.	N.D.	0.2 mg/kg
Benzo(e)pyrene	N.D.	N.D.	N.D.	N.D.	0.2 mg/kg
Dibenzo(a,h)anthracene	N.D.	N.D.	N.D.	N.D.	0.2 mg/kg
Benzo(g,h,i)perylene	N.D.	N.D.	N.D.	N.D.	0.2 mg/kg
Indeno(1,2,3-cd)pyrene	N.D.	N.D.	N.D.	N.D.	0.2 mg/kg
Acenaphthene	N.D.	N.D.	N.D.	N.D.	0.2 mg/kg
Fluorene	N.D.	N.D.	N.D.	N.D.	0.2 mg/kg
Acenaphthylene	N.D.	N.D.	N.D.	N.D.	0.2 mg/kg

# Test Report

Report No. A224004257650101R2

Page 10 of 25

Tested Item(s)	Result	MDL
	A2240042576501002	
<b>Polycyclic Aromatic Hydrocarbons (PAHs) *</b>		
Naphthalene	0.8 mg/kg	0.2 mg/kg
Phenanthrene	N.D.	0.2 mg/kg
Anthracene	N.D.	0.2 mg/kg
Fluoranthene	N.D.	0.2 mg/kg
Pyrene	N.D.	0.2 mg/kg
Chrysene	N.D.	0.2 mg/kg
Benzo(a)anthracene	N.D.	0.2 mg/kg
Benzo(b)fluoranthene	N.D.	0.2 mg/kg
Benzo(k)fluoranthene	N.D.	0.2 mg/kg
Benzo(j)fluoranthene	N.D.	0.2 mg/kg
Benzo(a)pyrene	N.D.	0.2 mg/kg
Benzo(e)pyrene	N.D.	0.2 mg/kg
Dibenzo(a,h)anthracene	N.D.	0.2 mg/kg
Benzo(g,h,i)perylene	N.D.	0.2 mg/kg
Indeno(1,2,3-cd)pyrene	N.D.	0.2 mg/kg
Acenaphthene	N.D.	0.2 mg/kg
Fluorene	N.D.	0.2 mg/kg
Acenaphthylene	N.D.	0.2 mg/kg

Tested Item(s)	Result			MDL
	A22400425 76501001	A22400425 76501002	A22400425 76501003	
Fluorine (F)	N.D.	N.D.	N.D.	10 mg/kg
Chlorine (Cl)	N.D.	N.D.	N.D.	10 mg/kg
Bromine (Br)	N.D.	N.D.	N.D.	10 mg/kg
Iodine (I)	N.D.	N.D.	N.D.	10 mg/kg

# Test Report

Report No. A224004257650101R2

Page 11 of 25

Tested Item(s)	Result			MDL
	A22400425 76501004	A22400425 76501005	A22400425 76501006	
Fluorine (F)	N.D.	N.D.	N.D.	10 mg/kg
Chlorine (Cl)	N.D.	145 mg/kg	N.D.	10 mg/kg
Bromine (Br)	N.D.	N.D.	N.D.	10 mg/kg
Iodine (I)	N.D.	N.D.	N.D.	10 mg/kg

Tested Item(s)	Result		MDL
	A22400425 76501007	A22400425 76501008	
Fluorine (F)	N.D.	78 mg/kg	10 mg/kg
Chlorine (Cl)	N.D.	N.D.	10 mg/kg
Bromine (Br)	N.D.	N.D.	10 mg/kg
Iodine (I)	N.D.	N.D.	10 mg/kg

Tested Item(s)	Result	MDL
	A2240146335101001	
Fluorine (F) #	N.D.	10 mg/kg
Chlorine (Cl) #	N.D.	10 mg/kg
Bromine (Br) #	N.D.	10 mg/kg
Iodine (I) #	N.D.	10 mg/kg

# Test Report

Report No. A224004257650101R2

Page 12 of 25

Tested Item(s)	Result	MDL
	A2240042576501001	
<b>Phthalates</b>		
Dibutyl phthalate (DBP) CAS#:84-74-2*	N.D.	50 mg/kg
Butyl benzyl phthalate (BBP) CAS#:85-68-7*	N.D.	50 mg/kg
Di-(2-ethylhexyl) phthalate (DEHP) CAS#:117-81-7*	N.D.	50 mg/kg
Diisobutyl phthalate (DIBP) CAS#:84-69-5*	N.D.	50 mg/kg
Di-n-octyl phthalate (DNOP) CAS#:117-84-0	N.D.	30 mg/kg
Di-isononyl phthalate (DINP) CAS#:28553-12-0,68515-48-0	N.D.	50 mg/kg
Di-iso-decyl phthalate (DIDP) CAS#:26761-40-0,68515-49-1	N.D.	50 mg/kg
Dimethyl phthalate (DMP) CAS#:131-11-3	N.D.	30 mg/kg
Diethyl phthalate (DEP) CAS#:84-66-2	N.D.	30 mg/kg
Dipropyl phthalate (DPrP) CAS#:131-16-8	N.D.	30 mg/kg
Dipentyl phthalate (DPP/DPENP) CAS#:131-18-0	N.D.	30 mg/kg
Diheptyl phthalate (DHP) CAS#:3648-21-3	N.D.	30 mg/kg
Dicyclohexyl phthalate (DCHP) CAS#:84-61-7	N.D.	30 mg/kg
Diisooctyl phthalate (DIOP) CAS#:27554-26-3	N.D.	50 mg/kg
Dinonyl phthalate (DNP) CAS#:84-76-4	N.D.	30 mg/kg
Diisononyl adipate (DINA) CAS#:33703-08-1	N.D.	50 mg/kg

# Test Report

Report No. A224004257650101R2

Page 13 of 25

Tested Item(s)	Result			MDL
	A22400425 76501002	A22400425 76501003	A22400425 76501004	
<b>Phthalates</b>				
Dibutyl phthalate (DBP) CAS#:84-74-2	N.D.	N.D.	N.D.	50 mg/kg
Butyl benzyl phthalate (BBP) CAS#:85-68-7	N.D.	N.D.	N.D.	50 mg/kg
Di-(2-ethylhexyl) phthalate (DEHP) CAS#:117-81-7	N.D.	N.D.	N.D.	50 mg/kg
Diisobutyl phthalate (DIBP) CAS#:84-69-5	N.D.	N.D.	N.D.	50 mg/kg
Di-n-octyl phthalate (DNOP) CAS#:117-84-0	N.D.	N.D.	N.D.	30 mg/kg
Di-isononyl phthalate (DINP) CAS#:28553-12-0,68515-48-0	N.D.	N.D.	N.D.	50 mg/kg
Di-iso-decyl phthalate (DIDP) CAS#:26761-40-0,68515-49-1	N.D.	N.D.	N.D.	50 mg/kg
Dimethyl phthalate (DMP) CAS#:131-11-3	N.D.	N.D.	N.D.	30 mg/kg
Diethyl phthalate (DEP) CAS#:84-66-2	N.D.	N.D.	N.D.	30 mg/kg
Dipropyl phthalate (DPrP) CAS#:131-16-8	N.D.	N.D.	N.D.	30 mg/kg
Dipentyl phthalate (DPP/DPENP) CAS#:131-18-0	N.D.	N.D.	N.D.	30 mg/kg
Diheptyl phthalate (DHP) CAS#:3648-21-3	N.D.	N.D.	N.D.	30 mg/kg
Dicyclohexyl phthalate (DCHP) CAS#:84-61-7	N.D.	N.D.	N.D.	30 mg/kg
Diisooctyl phthalate (DIOP) CAS#:27554-26-3	N.D.	N.D.	N.D.	50 mg/kg
Dinonyl phthalate (DNP) CAS#:84-76-4	N.D.	N.D.	N.D.	30 mg/kg
Diisononyl adipate (DINA) CAS#:33703-08-1	N.D.	N.D.	N.D.	50 mg/kg

# Test Report

Report No. A224004257650101R2

Page 14 of 25

Tested Item(s)	Result			MDL
	A22400425 76501005	A22400425 76501006	A22400425 76501007	
<b>Phthalates</b>				
Dibutyl phthalate (DBP) CAS#:84-74-2	N.D.	N.D.	N.D.	50 mg/kg
Butyl benzyl phthalate (BBP) CAS#:85-68-7	N.D.	N.D.	N.D.	50 mg/kg
Di-(2-ethylhexyl) phthalate (DEHP) CAS#:117-81-7	N.D.	N.D.	N.D.	50 mg/kg
Diisobutyl phthalate (DIBP) CAS#:84-69-5	N.D.	N.D.	N.D.	50 mg/kg
Di-n-octyl phthalate (DNOP) CAS#:117-84-0*	N.D.	N.D.	N.D.	30 mg/kg
Di-isononyl phthalate (DINP) CAS#:28553-12-0,68515-48-0*	N.D.	N.D.	N.D.	50 mg/kg
Di-iso-decyl phthalate (DIDP) CAS#:26761-40-0,68515-49-1*	N.D.	N.D.	N.D.	50 mg/kg
Dimethyl phthalate (DMP) CAS#:131-11-3*	N.D.	N.D.	N.D.	30 mg/kg
Diethyl phthalate (DEP) CAS#:84-66-2*	N.D.	N.D.	N.D.	30 mg/kg
Dipropyl phthalate (DPrP) CAS#:131-16-8*	N.D.	N.D.	N.D.	30 mg/kg
Dipentyl phthalate (DPP/DPENP) CAS#:131-18-0*	N.D.	N.D.	N.D.	30 mg/kg
Diheptyl phthalate (DHP) CAS#:3648-21-3*	N.D.	N.D.	N.D.	30 mg/kg
Dicyclohexyl phthalate (DCHP) CAS#:84-61-7*	N.D.	N.D.	N.D.	30 mg/kg
Diisooctyl phthalate (DIOP) CAS#:27554-26-3*	N.D.	N.D.	N.D.	50 mg/kg
Dinonyl phthalate (DNP) CAS#:84-76-4*	N.D.	N.D.	N.D.	30 mg/kg
Diisononyl adipate (DINA) CAS#:33703-08-1*	N.D.	N.D.	N.D.	50 mg/kg

# Test Report

Report No. A224004257650101R2

Page 15 of 25

Tested Item(s)	Result		MDL
	A22400425 76501008	A22400425 76501009	
<b>Phthalates</b>			
Dibutyl phthalate (DBP) CAS#:84-74-2	N.D.	N.D.	50 mg/kg
Butyl benzyl phthalate (BBP) CAS#:85-68-7	N.D.	N.D.	50 mg/kg
Di-(2-ethylhexyl) phthalate (DEHP) CAS#:117-81-7	N.D.	N.D.	50 mg/kg
Diisobutyl phthalate (DIBP) CAS#:84-69-5	N.D.	N.D.	50 mg/kg
Di-n-octyl phthalate (DNOP) CAS#:117-84-0	N.D.	N.D.	30 mg/kg
Di-isononyl phthalate (DINP) CAS#:28553-12-0,68515-48-0	N.D.	N.D.	50 mg/kg
Di-iso-decyl phthalate (DIDP) CAS#:26761-40-0,68515-49-1	N.D.	N.D.	50 mg/kg
Dimethyl phthalate (DMP) CAS#:131-11-3	N.D.	N.D.	30 mg/kg
Diethyl phthalate (DEP) CAS#:84-66-2	N.D.	N.D.	30 mg/kg
Dipropyl phthalate (DPrP) CAS#:131-16-8	N.D.	N.D.	30 mg/kg
Dipentyl phthalate (DPP/DPENP) CAS#:131-18-0	N.D.	N.D.	30 mg/kg
Diheptyl phthalate (DHP) CAS#:3648-21-3	N.D.	N.D.	30 mg/kg
Dicyclohexyl phthalate (DCHP) CAS#:84-61-7	N.D.	N.D.	30 mg/kg
Diisooctyl phthalate (DIOP) CAS#:27554-26-3	N.D.	N.D.	50 mg/kg
Dinonyl phthalate (DNP) CAS#:84-76-4	N.D.	N.D.	30 mg/kg
Diisononyl adipate (DINA) CAS#:33703-08-1	N.D.	N.D.	50 mg/kg

# Test Report

Report No. A224004257650101R2

Page 16 of 25

Tested Item(s)	Result			MDL
	A22400425 7650101001	A22400425 7650101002	A22400425 7650101003	
<b>Phthalates</b>				
Dibutyl phthalate (DBP) CAS#:84-74-2	N.D.	N.D.	N.D.	50 mg/kg
Butyl benzyl phthalate (BBP) CAS#:85-68-7	N.D.	N.D.	N.D.	50 mg/kg
Di-(2-ethylhexyl) phthalate (DEHP) CAS#:117-81-7	N.D.	N.D.	N.D.	50 mg/kg
Diisobutyl phthalate (DIBP) CAS#:84-69-5	N.D.	N.D.	N.D.	50 mg/kg
Tested Item(s)	Result			MDL
	A22400425 7650101004	A22400425 7650101008	A22400425 7650101009	
<b>Phthalates</b>				
Dibutyl phthalate (DBP) CAS#:84-74-2	N.D.	N.D.	N.D.	50 mg/kg
Butyl benzyl phthalate (BBP) CAS#:85-68-7	N.D.	N.D.	N.D.	50 mg/kg
Di-(2-ethylhexyl) phthalate (DEHP) CAS#:117-81-7	N.D.	N.D.	N.D.	50 mg/kg
Diisobutyl phthalate (DIBP) CAS#:84-69-5	N.D.	N.D.	N.D.	50 mg/kg



# Test Report

Report No. A224004257650101R2

Page 17 of 25

Tested Item(s)	Result			MDL
	A22400425 76501001	A22400425 76501002	A22400425 76501004	
Tetrabromobisphenol A (TBBP-A)	N.D.	N.D.	N.D.	5 mg/kg
Tested Item(s)	Result			MDL
	A22400425 76501005	A22400425 76501006	A22400425 76501007	
Tetrabromobisphenol A (TBBP-A)	N.D.	N.D.	N.D.	5 mg/kg
Tested Item(s)	Result		MDL	
	A22400425 76501008	A22400425 76501009		
Tetrabromobisphenol A (TBBP-A)	N.D.	N.D.	5 mg/kg	
Tested Item(s)	Result		MDL	
	A2240042576501003			
Tetrabromobisphenol A (TBBP-A) *	N.D.		5 mg/kg	
Tested Item(s)	Result			MDL
	A22400425 76501001	A22400425 76501002	A22400425 76501003	
Perfluorooctane Sulfonates (PFOS)	N.D.	N.D.	N.D.	0.010 mg/kg
Tested Item(s)	Result			MDL
	A22400425 76501005	A22400425 76501006	A22400425 76501007	
Perfluorooctane Sulfonates (PFOS)	N.D.	N.D.	N.D.	0.010 mg/kg
Tested Item(s)	Result		MDL	
	A22400425 76501008	A22400425 76501009		
Perfluorooctane Sulfonates (PFOS)	N.D.	N.D.	0.010 mg/kg	

# Test Report

Report No. A224004257650101R2

Page 18 of 25

Tested Item(s)	Result	MDL
	A2240042576501004	
Perfluorooctane Sulfonates (PFOS) *	N.D.	0.010 mg/kg

Tested Item(s)	Result			MDL
	A2240042576501001	A2240042576501002	A2240042576501003	
Red phosphorus	Negative	Negative	Negative	500 mg/kg

Tested Item(s)	Result			MDL
	A2240042576501004	A2240042576501005	A2240042576501006	
Red phosphorus	Negative	Negative	Negative	500 mg/kg

Tested Item(s)	Result		MDL
	A2240042576501007	A2240042576501009	
Red phosphorus	Negative	Negative	500 mg/kg

Tested Item(s)	Result	MDL
	A2240042576501008	
Red phosphorus*	Negative	500 mg/kg

## Sample/Part Description

No.	CTI Sample ID	Description
1	A2240042576501001	Black plastic grains
2	A2240042576501002	White plastic grains
3	A2240042576501003	Brown plastic grains
4	A2240042576501004	Blue plastic grains
5	A2240042576501005	Yellow plastic grains
6	A2240042576501006	Green plastic grains
7	A2240042576501007	Gray plastic grains
8	A2240042576501008	White plastic
9	A2240042576501009	Black plastic
10	A2240075667101010	Cupreous metal wire
11	A2240075667101011	Metal with silvery plating
12	A2240075667101012	Golden metal
13	A2240146335101001	Black plastic

# Test Report

Report No. A224004257650101R2

Page 19 of 25

**Remark: The sample(s) had been dissolved totally tested for Lead, Cadmium, Mercury.**

-MDL = Method Detection Limit

-N.D. = Not Detected (&lt;MDL or LOQ)

-mg/kg = ppm = parts per million

-LOQ = Limit of Quantification, The LOQ of Hexavalent chromium is 0.10  $\mu\text{g}/\text{cm}^2$ 

-▼The sample is negative for Cr(VI) – The Cr(VI) concentration is below 0.10  $\mu\text{g}/\text{cm}^2$ . The coating is considered a non-Cr(VI) based coating. Information on storage conditions and production date of the tested sample is unavailable and thus Cr(VI) results represent status of the sample at the time of testing.

-Negative = Not Contained (The red phosphorus is qualified by PY-GC-MS method which detect pyrolysis products  $\text{P}_4$  of red phosphorus. But there is a false positive risk by performing this method, since  $\text{P}_4$  could also generate while the phosphate and organic phosphate coexist with some strong oxidizing or reductant agent in pyrolysis process. The result for reference only.)

-\*=The test result(s) is/are presented in reference to the result(s) that reported in A224007566710101.

-#=The test result(s) is/are presented in reference to the result(s) that reported in A2240146335101001.

**Note: This testing report revised the full text based on the original report of No. A224004257650101R1. This testing report displaces the original one which was invalid since the date of this testing report released.**

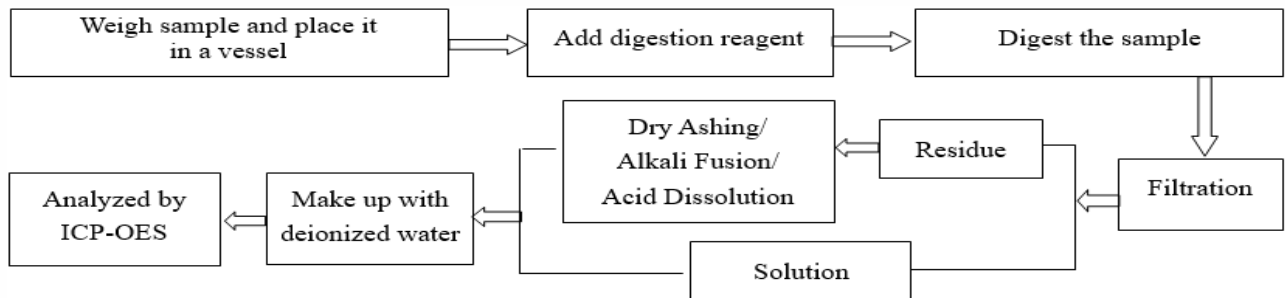
# Test Report

Report No. A224004257650101R2

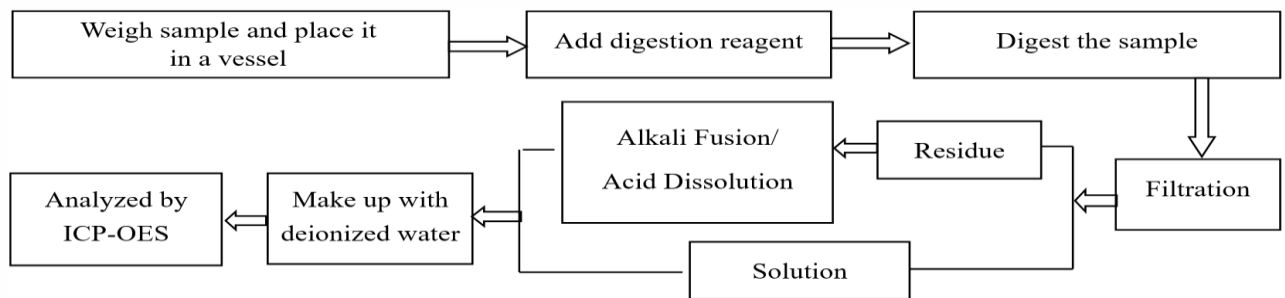
Page 20 of 25

## Test Process

### 1. Lead (Pb), Cadmium (Cd), Chromium(Cr)

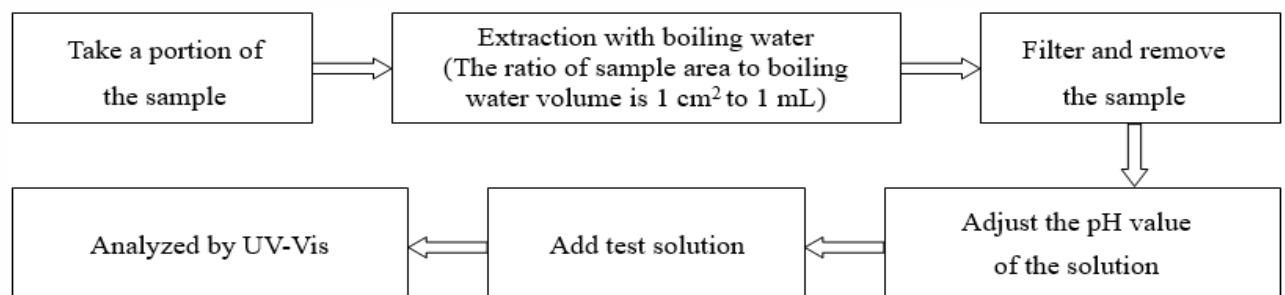


### 2. Mercury (Hg)

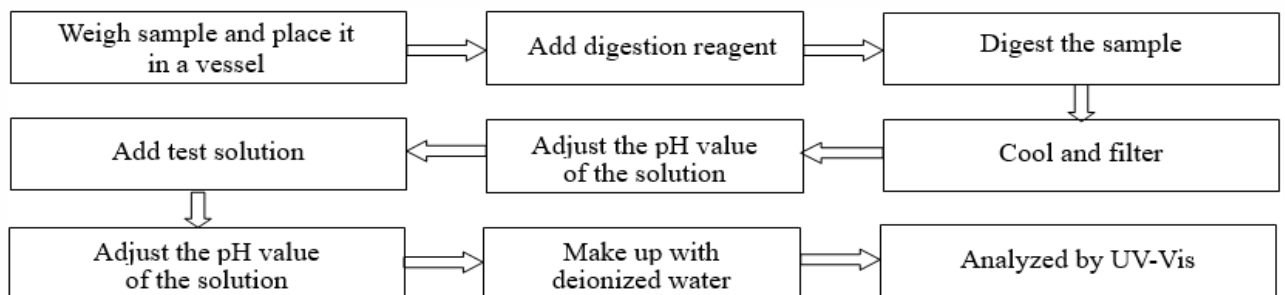


### 3. Hexavalent Chromium (Cr(VI))

#### (1) IEC 62321-7-1:2015



#### (2) IEC 62321-7-2:2017

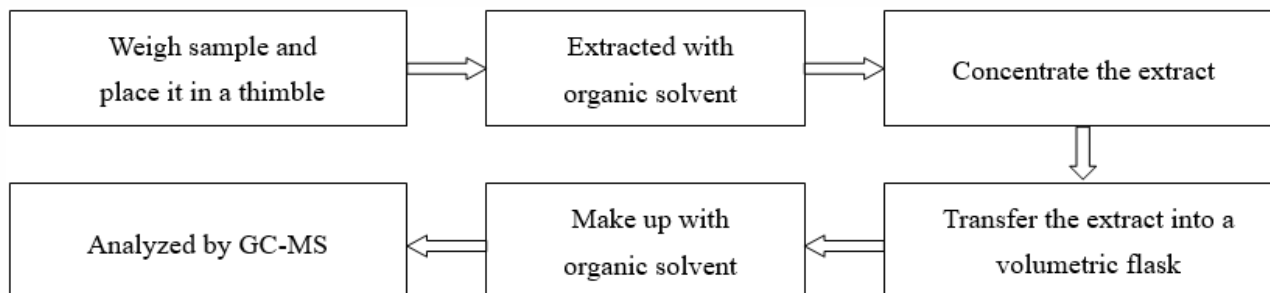


# Test Report

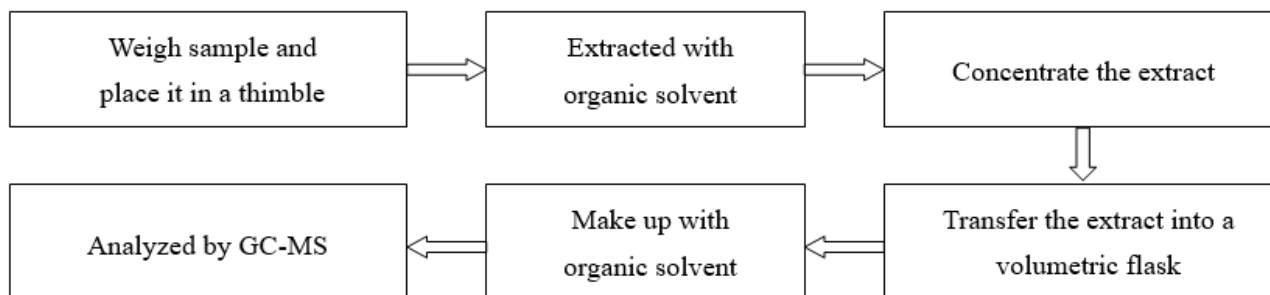
Report No. A224004257650101R2

Page 21 of 25

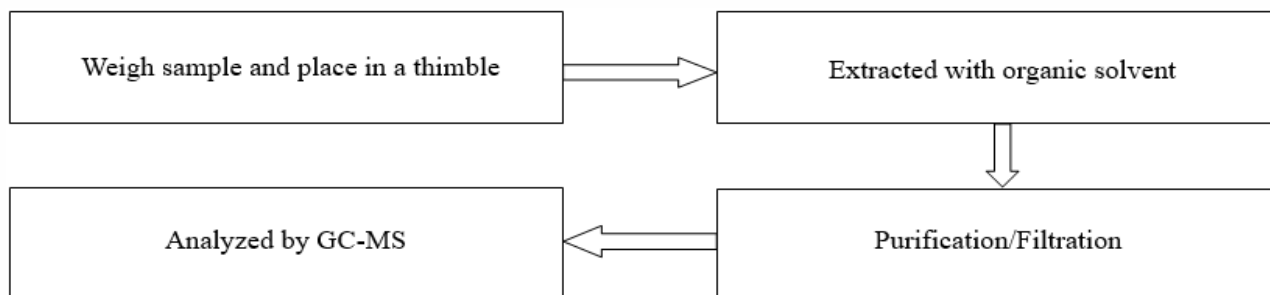
## 4. Polybrominated Biphenyls (PBBs), Polybrominated Diphenyl Ethers (PBDEs)



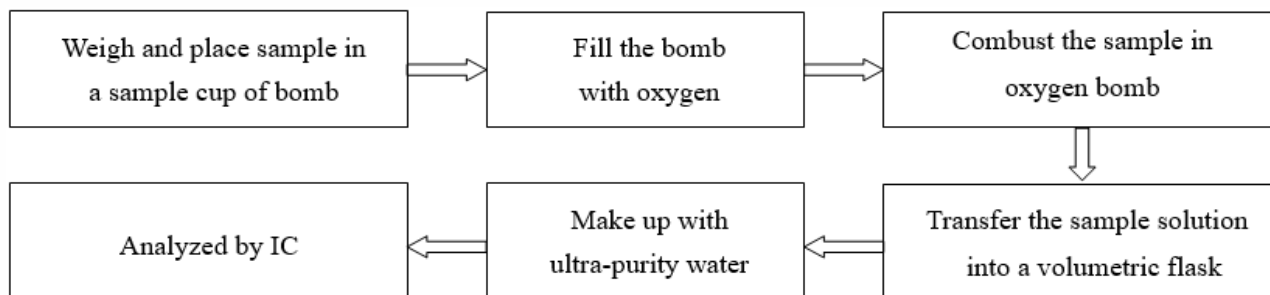
## 5. Phthalates (DBP, BBP, DEHP, DIBP), Phthalates



## 6. Polycyclic Aromatic Hydrocarbons (PAHs)



## 7. Fluorine (F), Chlorine (Cl), Bromine (Br), Iodine (I)

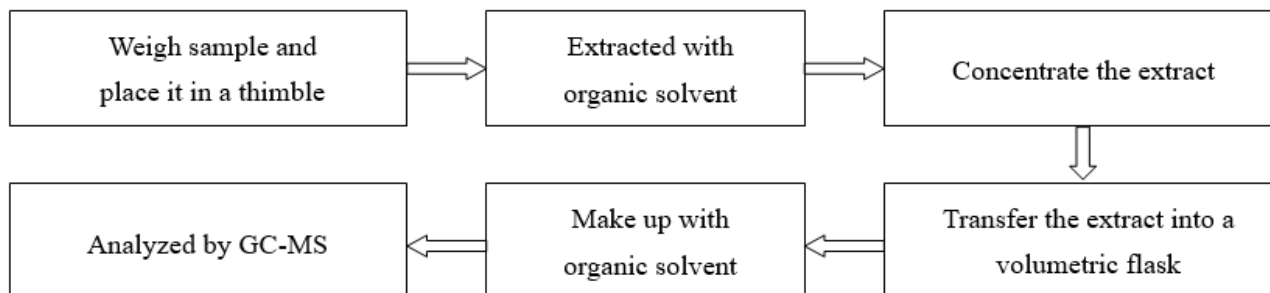


# Test Report

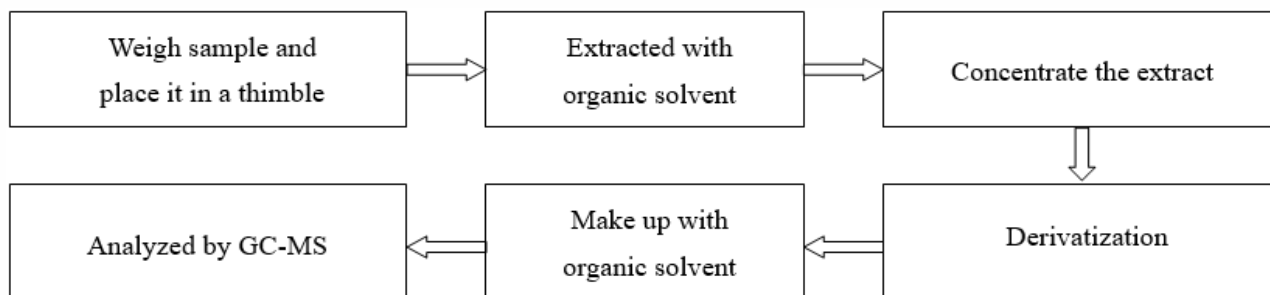
Report No. A224004257650101R2

Page 22 of 25

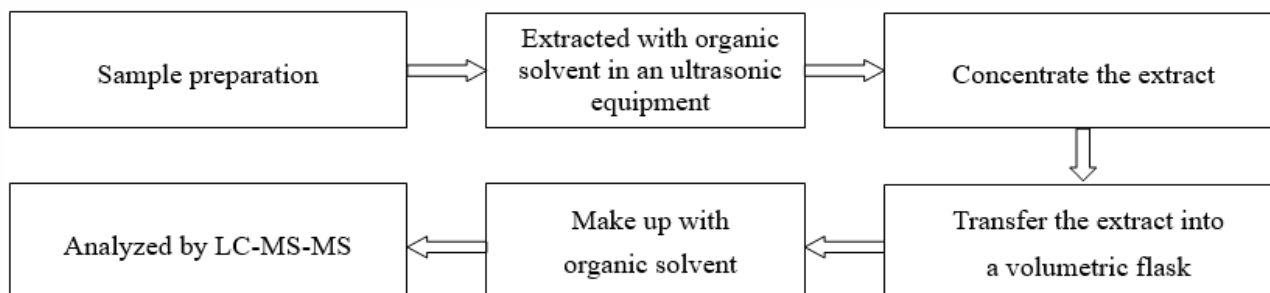
## 8. Phthalates



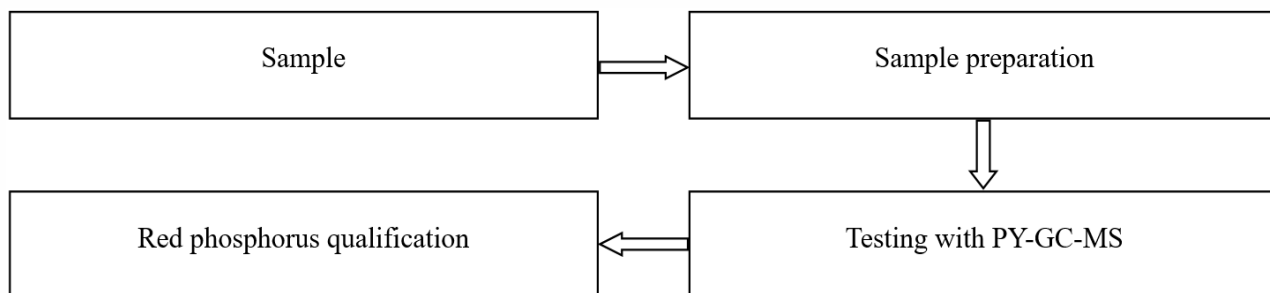
## 9. Tetrabromobisphenol A (TBBP-A)



## 10. Perfluorooctane Sulfonates(PFOS)



## 11. Red phosphorus



# Test Report

Report No. A224004257650101R2

Page 23 of 25

## Photo(s) of the sample(s)



# Test Report

Report No. A224004257650101R2

Page 24 of 25



A2240042576501007



A2240042576501008



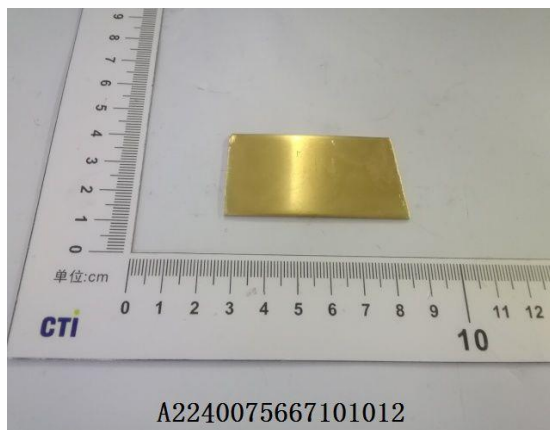
A2240042576501009



A2240075667101010



A2240075667101011



A2240075667101012



# Test Report

Report No. A224004257650101R2

Page 25 of 25



Statement:

1. This report is considered invalid without approved signature, special seal and the seal on the perforation;
2. The Company Name shown on Report and Address, the sample(s) and sample information was/were provided by the applicant who should be responsible for the authenticity which CTI hasn't verified;
3. The result(s) shown in this report refer(s) only to the sample(s) tested;
4. Unless otherwise stated, the decision rule for conformity reporting is based on Binary Statement for Simple Acceptance Rule ( $w=0$ ) stated in ILAC-G8:09/2019 / CNAS-GL015:2022;
5. Without written approval of CTI, this report can't be reproduced except in full;
6. In case of any discrepancy between the English version and Chinese version of the testing reports (if generated), the Chinese version shall prevail.

\*\*\* End of Report \*\*\*

## Appendix

### Client Reference Information

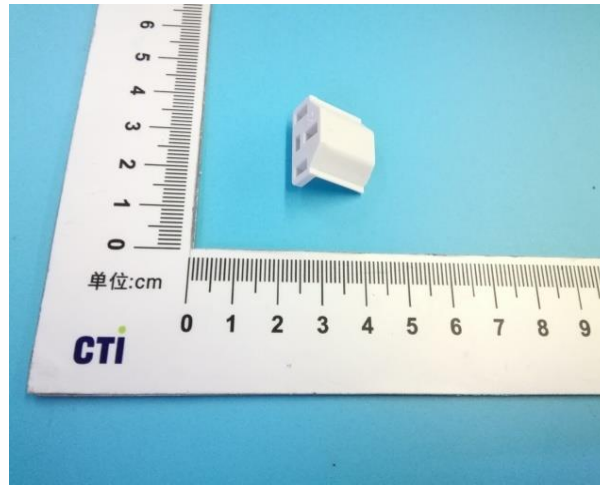
YP-01 YP-16 YP-55 YP-96L  
YP-12L-10 YP-16L YP-56 YP-97L  
YP-12L-11 YP-16H YP-58 YP-98L  
YP-06 YP-16HLYP-58N YP-99L  
YP-07 YP-16C YP-61A YP-103L  
YP-08 YP-17 YP-62 YL-915  
YP-09 YP-17L YP-64 YL-921B  
YP-10 YP-17H YP-65 YP-46Z  
YP-11 YP-17HLYP-66 YP-107  
YP-11A YP-17C YP-67 YP-108  
YP-11B YP-18 YP-68L YP-109  
YP-11C YP-18A YP-69L  
YP-11K YP-18B YP-72L  
YP-11L YP-18L YP-73L  
YP-11L-9 YP-18N YP-74L  
YP-11W YP-18T YP-75L  
YP-11P YP-18G YP-76  
YP-11T YP-19 YP-77  
YP-11R YP-19L YP-78  
YP-11K YP-19H YP-79  
YP-11F YP-19HLYP-82  
YP-12 YP-19C YP-83  
YP-12A YP-21Z YP-84  
YP-12C YP-22Z YP-88L  
YP-12E YP-23Z YP-90L  
YP-12G YP-24Z YP-91L  
YP-12L YP-32Z YP-92L  
YP-12L-9 YP-33Z YP-93L  
YP-12N YP-52 YP-94L  
YP-12P YP-53 YP-95L  
YP-12D YP-54 YP-33A  
YP-33 YP-32F YP-33B  
YP-32A YP-33AL  
YP-32L YP-32BL  
YP-31 YP-32BL

YC-04 YC-13G YC-52 YC-12Z  
YC-05 YC-13L YC-52A YC-13Z  
YC-05-1 YC-13LG YC-53 YC-14Z  
YC-05A YC-14 YC-54 YC-12LZ  
YC-05B YC-14G YC-55 YC-13LZ  
YC-05C YC-14L YC-55A YC-14LZ  
YC-05E YC-14GL YC-56 YC-18LZ  
YC-05F YC-15 YC-58  
YC-05L YC-15A YC-62 SR 系列  
YC-06 YC-16 YC-64  
YC-06R YC-17 YC-72

YC-07 YC-18 YC-73L  
YC-08 YC-18L YC-77  
YC-11 YC-18A YC-77A  
YC-11GL YC-18Z YC-79  
YC-12 YC-19 YC-79A  
YC-12A YC-20 YC-07A  
YC-12C YC-20D1YC-12E  
YC-12D YC-20L YC-18E  
YC-12G YC-20L-1 YC-15E  
YC-12K YC-20LR YC-25E  
YC-12L YC-21 YC-91L  
YC-12LR YC-21A YC-92L  
YC-12-01 YC-21L YC-93L  
YC-12GL YC-21F YC-75L  
YC-12HL YC-25  
YC-13 YC-25L  
YC-13C YC-12GLR  
YC-13D YC-12G+E  
YC-13W  
YC-13E

## Client Reference Photo (Non-tested sample)

008



### Statement:

1. The Appendix Information was/were provided by the applicant who should be responsible for the authenticity which CTI hasn't verified.
2. The Appendix Information is/are the supplement(s) for the Report A224004257650101R2.